

Hennis Upholstery



Re-Upholstery • Bespoke Sofas & Chairs
Tailored Loose Covers • Curtains & Blinds
Headboards & Window Seats

Accounts with
Sanderson, Zofany, Romo & many more

(RE-)COVERING LONDON & THE HOME COUNTIES

T: 01689 800099
E: hennisupholstery@gmail.com
W: www.hennisupholstery.com

30 YEARS ESTABLISHED – FAMILY BUSINESS

Welcome to the **Moving Church News** the bi-monthly magazine of St. Mark's Church, Biggin Hill

Forthcoming Events

All Souls' Service

29th October (See page 19)

Remembrance Sunday

12th November (See page 27)

Forest Church

19th November (See page 15)

Contents

Imagine if God had a voicemail!	5
St. Mark's Church festival of Baptism 2024	7
Meet the Author of 'Grandfather's Biggin Hill'	8
At St. Mark's	11
The Fenland Black Oak JubileeTable	13
Forest Church	15
Threads Through Creation	16
Church Registers	19
All Souls' Service	19
The Arts Society Limpsfield	20
Safer Biggin Hill - Making it Happen?	22
Biggin Hill Residents Association	24
Late Summer Colour!	25
Sevenoaks Philharmonic Choir	27
Christmas Tree Festival and Christmas Fair	28
Community Telephone Numbers	30
The Next Moving Church News	31

Front cover - In August St. Mark's ran a holiday club for primary children. One of the highlights was the bubble session!

St. Mark's Parish Church, Biggin Hill

Church Road, Biggin Hill, Kent, TN16 3LB

Parish office: 01959 577816

Email: admin@movingchurch.org

St Mark's website: www.movingchurch.org



st mark's biggin hill - 'the moving church'

Vicar	Revd. Alison Newman	01959 540482
Church Wardens	Patrick O Sullivan	01959 572684
	Rohan Perera	01959 574355
Reader/Evangelist	Mark Newman	01959 540482

**For Hall Bookings, Baptism, Wedding and general enquiries,
please contact the Parish Office.**

**Office hours: Monday, Tuesday, Wednesday
9.30 am to 12 noon**

Services at St. Mark's

First Sunday in the month

**8.00am Communion -
Book of Common Prayer**

10.30am All Age Worship

Other Sundays

10.30am Parish Communion

Wednesdays

10.00am Holy Communion Service

Imagine if God had a voicemail:

'Thank you for calling heaven. I am sorry, all of our angels are busy helping others right now, but your prayer is important to us so please stay on the line. We are experiencing a particularly high volume of calls.

Please select one of the following options:

- Press 1 for request
- Press 2 for thanksgivings
- Press 3 for complaints
- Press 4 for all other enquiries

If you would like to hear the angels singing while you are holding, press 5.

If you are calling after hours and need emergency assistance, please contact your local vicar.'

Aren't you relieved God doesn't have a voicemail! In fact, the bible says

Do not be anxious about anything, but in everything by prayer and supplication with thanksgiving let your requests be made known to God. (Philippians 4:6)

So...

What is prayer?

It's having a conversation with God, talking to him either out loud, or in silence in our hearts.

How do I pray?

You can pray anytime, anywhere. Just be yourself and talk sincerely to God. You don't need to use special language! Speak to Him like a friend.

If you've got a few minutes read this introduction to prayer which explains more.

<https://www.churchofengland.org/prayer-and-worship/learning-pray>

At the end of the day, how about reviewing the day with God – go through the day and become aware of when you felt God was particularly present with you, the people you have met, the conversations you have had, perhaps being sorry for the lost

opportunities or times you feel you messed up, or what drew you closer to God today. What really encouraged you today?

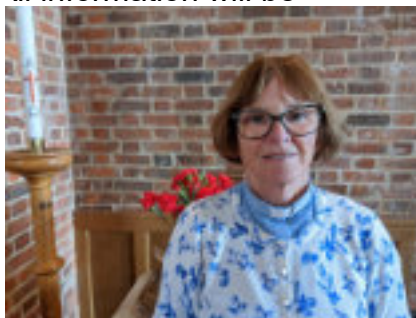
Prayer activity is a discipline - it can be difficult at times, just like keeping fit, being on a diet, or keeping weeds down in the garden! Little and often is best, but don't give up. No prayer, however inadequate you may feel it to be, is ever wasted or of no value.

At St Mark's we believe in the power of prayer. It is our experience that prayer releases God's love into the world and into our lives. We regularly pray for the people who live in our local area.

If you have any particular prayer requests please feel free to email our parish office admin@movingchurch.org or post your request in the church hall letter box. All information will be treated sensitively and confidentially if you wish.

You may say you don't believe in God, but remember God believes in you!

Revd. Alison Newman



The people of St. Mark's Church would like you to know that we pray for Biggin Hill regularly.

If you would like us to pray for you, someone you know or for something that concerns you, please let us know and we will be happy to do so. In order to comply with the Data Protection Regulations, please ensure you have the permission of the person to be prayed for.

Please contact the Church office. The times the office is open can be found on page four. A message can be left on the answer machine outside of these times - 01959 577816

If you prefer, you could send your prayer request to St. Mark's Vicarage, 10, Church Road, Biggin Hill, Kent TN16 3LB

St Mark's Church Festival of Baptism 2024

In April 2020, we at St Mark's had planned to hold a celebration of Baptism in the church and church hall. However, because COVID restrictions were at their height we had to cancel. So next year, on Saturday April 27th, as part of the St Mark's Day, we will be holding our Festival of Baptism from 10.00am to 3.00pm. We will be displaying clothes which children have been wearing when they were baptised/christened either in St Marks Church itself but also those which were used to baptise children



elsewhere over the years. We already have some ready to display but would love to receive even more! So if you have tucked away (as so many of us do!) the outfit your child or you yourself wore, or even one worn over more generations, we would love to show everyone. If you have any photographs of the day especially any taken in or around the church they would be a wonderful addition. I realise that for so many people in the community, St Mark's is your church and so it would be great to look back over the years and see once again the faces of both those who were baptised/christened here and also of their families.

To add a little more nostalgia to the day we also plan to show some of the toys those children would have played with as they grew up. Now I know for certain that many of you have those stored away in the attic for the next generation or just because they bring back so many memories. We plan to have at least one train set laid out for you to try, maybe even a Scalextric? So lots of fun to be had by all. (And, of course, there will also be cake!).

We will take good care of anything you lend us -please don't forget to put your name and address on anything you send us! We are starting to collect material now and any contributions will be gladly accepted so please contact either the Parish Office on 01959 577816 or me on 01959 576093. Let's look forward to an interesting, nostalgic and fun filled day for all the family!

Caroline Budimir.

Assistant Churchwarden

Meet the Author of *Grandfather's Biggin Hill* Part 1

John Nelson tells the story of how the glass photographic plates, which give a snapshot of life in Biggin Hill in the first quarter of the 20th century, came to light when they were given to him in the late 1970s. They were the work of his grandfather, William Henry Nelson, and for 20 years had been kept by his widow in the loft at her home in Arthur Road, and then kept by his uncle Harry, living in his bungalow opposite, in his garden shed for 30 years.



John was born in 1931 in Sutherland Avenue, behind Waitrose. In his early years he attended the village's only school, Biggin Hill Council School, and then moved to Clark's College Bromley. He went into the general education section, which included the study of algebra and geometry, which he is sure he has never used since! The central building on the Biggin Hill Recreation Ground was built in the late 1930s as a cricket pavilion and during WW2 was taken over as a first-aid post. Nurses were on duty there throughout the war with beds set up to take casualties. As a youngster, John's contribution to the war effort was to attend their training sessions as a guinea pig. The lead nurse would put coloured grease paint marking on his body to represent injuries, then the team of nurses came in and had to carry out whichever treatment they thought was needed; their work was then judged. The reward for the volunteers was tea and biscuits! John loved sport. He used to play cricket for Biggin Hill CC on weekends and occasionally for South London Master Bakers on Wednesdays. He also played football in season for Ace Rovers and Hayes Rovers.

The Headmaster of Clark's College, Mr Moss, who was always helpful in finding employment for students who were leaving, agreed with John that he might make a good auctioneer. John made contact with all the auctioneers in Bromley and immediately got an interview and job with a man called Ted Drewery. Drewery later became well known as the developer of many of the properties in Allenby Road, Village Green Avenue and elsewhere in Biggin Hill. Ted and John got on very well; John suspects Nelson Close may have been named after him! It was an exciting time for John. Many people were emigrating following the war and auctions of furniture, effects and property were taking place in people's homes, sometimes two a week. For a while, John was happy.

John's father, Stanley, was a carpenter. John's uncle Harry was a well-known Biggin Hill character, a founder member of the Horticultural Society in 1922, and a great bricklayer. In the early 1930s, when there was little employment, Stanley borrowed from the Co-operative Building Society and the brothers built a house for John's parents on land next to the WI hall. The house was named Palace View, and is still there. John and his family lived in Palace View for six months while the house in Sutherland Avenue that they were due to be moving into, was being renovated.

After the war his father bought Northfield on the Main Road, where Tudor Court now stands. This land led right through from Main Road to Sutherland Avenue. It was sold off by the family too early, John recalls. What would it have been worth today?

John's uncle, Rowland E. "Jack" Waldron, was a solicitor with practices in The Temple and at Orpington. When Jack was approached, he was delighted to invite John up to his London Office to learn how solicitors' offices work. After three weeks this led to John obtaining, through the Law Society's Appointments Bureau, his first job in the law, with Stoneham & Sons of Cannon Street as a probate clerk at £5.10s a week. They were an international firm with much work at the time assisting Holocaust survivors to establish their right to inherit assets belonging to relatives who had been victims, leaving cash, jewellery and other property deposited in London banks.

In 1955 John made his next move, to Botterell & Roche in St Mary Axe, solicitors who had wealthy shipowners among their clients. Whilst there he qualified by examination as a Solicitors' Managing Clerk and subsequently as a Legal Executive specialising in probate, charitable trusts and will draughtsmanship.

At Botterell and Roche John got to know his future wife by means of a fountain pen filled with red ink! Stella was secretary to a brilliant solicitor, Michael Baddeley Davies. A youngish man, Michael had the



ability to write sentences that seemed to never end, or had any punctuation! This was at a time when enormous sums of money were starting to be lent on ship mortgages. Where, as a solicitor, do you start when required to draft documents to safely secure money lent to build or purchase a ship that might be hijacked, or sink, or get struck by lightning?

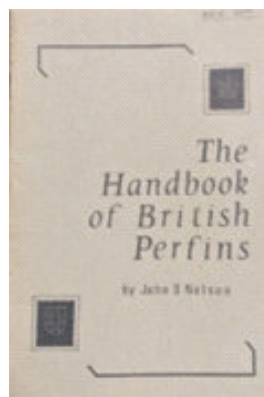
Michael Davies became an expert in drafting the precedents of these documents and Stella had the task of typing them up from Michael's overnight Dictaphone tapes. These documents are still commonly used in shipping finance, and it would still be possible for the originals to be traced back to drafts prepared by Michael Davies, typed up by Stella. John remembers it was very difficult to speak to her in the office, as she had so much work to do.

The typewriter Stella used had a ribbon, half black and half red. The red was used to underline headings and highlight some of the print but was messy and spoilt the appearance of Stella's impressively typed documents. In his office John used red ink in a fountain pen to amend leases which went to and fro between lessee to lessor, each suggested amendment having a different colour. Stella got to know about John's pen and regularly borrowed it to avoid using the red ribbon and that is how he got to know her! They married in 1959, the service taking place at St. Mary at Finchley, which is the part of London where Stella and her family came from.

In 1967 John moved employment again to join the staff of The Worshipful Company of Clothworkers, a City of London Livery Company formed in 1528. They had about 120 charitable trusts under their trusteeship, the majority of which were ancient charities connected with the City and at the same time gave substantial sums of their own money to charity each year. When he retired in 1987, John was presented with the Freedom of The Clothworkers' Company and with it the Freedom of the City of London.

A little-known fact about John is that *Grandfather's Biggin Hill* was not his first book. He had written and published *The Handbook of British Perfins* in 1967.

Ever since 1868, in order to discourage the theft of their stamps (which could then be sold back to the Post Office) by their employees, commercial users of stamps like banks, insurance companies and merchants, could have their stamps perforated with their initials which would be recognisable. For many years these stamps, which became known as **perfins**, derived from **perforated initials**, were discarded as damaged by philatelists but in the 1960s John and a dozen others who had decided they were collectable, formed what is now The Perfin Society with around 400 members worldwide.



Mark Newman

At St. Mark's.....

Music At St. Mark's

St. Mark's Music - songs and fellowship with a lively touch.
Call Chris on 01959 700815 for more details

Home Groups

Home groups meet every fortnight for fellowship and Bible Study. For more information contact Alison on 01959 540482

Baby & Toddler Group

Every Monday from 10.00 am in the Church Hall during school terms. Contact the Parish Office for details - 01959 577816 - or just come along.

Bell Ringing

Please contact the Parish Office on 01959 577816

1st Biggin Hill Guides

Please contact Rosemary Spurway on 01959 575717



DAY TRIPS BIGGIN HILL

Pick up opposite Waitrose, Main Road

- Tues 3 October – Ham House, Richmond £36pp NT £22pp
- Fri 6 October – The Knitting & Stitching Show, Alexander Palace £35.50pp
- Thurs 12 October – Osterley Park, Isleworth £36pp NT £22pp
- Wed 18 October – Bluewater Shopping £22pp.
- Mon 23 October – Ruxley Manor Garden Centre, Sidcup £22pp
- Tues 31 October – Brick Lane Musical, 'There'll always be an England' with Afternoon Tea £67pp
- Mon 6 November – Winter Country Tour to Chichester £22pp
- Thurs 9 November – Seaside Sunset with Live Entertainment and Fish & Chip supper £61pp
- Tues 14 November – Polhill Garden Centre, Sevenoaks £16pp
- Tues 28 November – FULL Christmas Lights tour & Fish & Chip supper £39pp
- Sat 2 December – Christmas Lights Glo Wild, Wakehurst Place £38pp
- Fri 8 December – Winchester Christmas Market £22pp
- Wed 13 December – Canterbury Christmas Market £22pp.
- Sat 16 December – Christmas Lights, Kew Gardens £47pp
- Mon 18 December – Royal Naval College Tour & Christmas Lunch, Greenwich £63pp
- Thurs 28 December – Christmas Lights at Beddington, Kent £42pp adult £36.50pp child

We have a new booking system for 2024

- Wed 10 January – Milestone Living Museum £38pp.
- Wed 31 January – Fulham Palace with Guided Tour £32pp
- Thurs 22 Feb – Museum of Power with guided tour £31pp

Tel : 01883 330095 or Email enquiries@allenbycoachhire.co.uk WWW.Allenbycoachhire.co.uk

Registered Charity
No: 1056336



Wednesday Lunch Club The Friendly Club!

Enjoy a warm welcome at our **Lunch Club** which is open from 12.15pm until 2pm. A three course meal is provided which is cooked on the premises. Afterwards hot drinks are served. Transport within Biggin Hill can be provided at a small cost.

Biggin Hill Day Centre

Our Day Centre provides a friendly and sociable environment where you will be supported by our professional care staff.

Start the day with a cuppa and a chat!
Morning and afternoon activities. Three course lunch cooked on the premises. Transport option for Biggin Hill residents. The Centre is open on Tuesdays and Thursdays. Provides respite for carers

Do you have difficulty doing your grocery shopping?

Assisted Shopping

Our Assisted Shopping takes place on Friday mornings and is for Biggin Hill residents who live independently but need help with their weekly grocery shop. Call Annette on 01959 700411.

Art Group

Our Art Group meets on Wednesdays from 2pm. Everyone is welcome from novice to expert. Light refreshments are provided. A small donation is requested for each session.

All places must be booked in advance. For more information, please call us on 01959 577400 or email bigginhillcommunitycare@gmail.com.

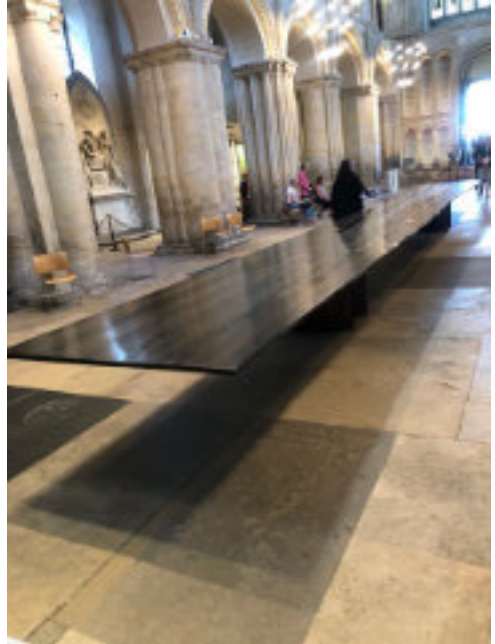
You can also visit our website: bigginhillcommunitycare.org or scan the QR code. We hire St. Mark's Hall, Church Road for our Day Centre, Lunch Club and Art Group.



The Fenland Black Oak Jubilee Table

I recently visited Rochester Cathedral where I was amazed to see the spectacular Fenland Black Oak Jubilee Table. The table is 13.2 metres long and is made from the wood of a 5,000-year-old fossilised black oak tree.

During routine cultivations on a farm in the Fenland Basin of East Anglia in 2012 (the year of the Queen's Diamond Jubilee) a section of a giant black oak tree was discovered. The overall height of the tree is thought to have been well over 50 metres (a present day mature oak tree is approximately 20 metres tall). The tree had fallen and been preserved deep in the peat for 5,000 years. In historical terms, well before the first pyramids were built and the extinction of woolly mammoths!



Black Oak is the nation's rarest and most precious hardwood and it was decided that this incredible discovery needed to be preserved for future generations. Over a period of ten years a team of privately-funded specialist craftspeople created the stunning sculptured table now known as the Jubilee Oak Table. It was unveiled at Ely Cathedral in 2022 (the year of the Queen's Platinum Jubilee), and Rochester Cathedral is now only the second place it has been on public display. The table is frequently used for a wide variety of activities.

The table, alongside panels detailing the history of the black oak and the project, can be viewed at the Cathedral during general opening hours and will remain on display there until March 2024. If you are able to travel to Rochester (a short train journey from Bromley South Station), please do visit the Cathedral to see this remarkable and beautiful table.

Christine Reeks

The Chartwell Charities

House Clearance and Waste Disposal Services



SCAN HERE
to find out more

Professional, sympathetic clearance, collection and waste management solutions you can rely on making a stressful task, hassle free.

Donated goods are resold through our network of charity shops, the proceeds dedicated to our fundraising projects.



Items unfit for sale are recycled or disposed of safely at a competitive rate, ensuring waste is kept to a minimum.

Committed to improving the lives of cancer and leukaemia patients by making a real difference to cancer care in our local communities.

Our charity shops are located in Selsdon, Croydon, Westerham, Tatsfield and Peckham and our services are available across these areas as well as London and the South-East.

BOOK ONLINE: www.chartwellcancertrust.co.uk/house-clearance/

01959 570322

www.chartwellcancertrust.co.uk

Charity Registration Number: **1109784**



BRIGHTLIGHT Electrician

Private & Commercial

**NAPIT Part P registered
J.I.B. qualified
Over 30 years experience**

**Rewires
Additional points
Lighting
EV chargers
EICR test
Fuseboard upgrades**

**Call Terry on 07930 673210
brightlight01@btinternet.com**



**New dog groomer
to your area!**

- Based in Badgers Mount
- City & Guilds Qualified
- Fully Insured
- 1 to 1 service

Contact Katie 07956 436670

Dapper Dogs Parlour



We clean your oven... so you don't have to.

Call today to have your oven, hob, extractor or Aga professionally cleaned

Rob Hadgiyianni contact details

Tel 01689 253525 / Mob. 07957 325452

Email rob.hadgiyianni@ovenwizards.com

www.ovenwizards.com

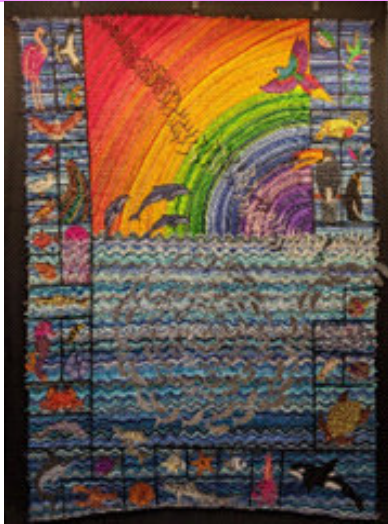
Forest Church

**Sunday 19th
November**

3.30pm

**We shall be thinking about
Autumn and enjoying
activities in the grounds of
the church
For adults and children
(Bring outdoor clothing)
Followed by refreshments**

Threads through Creation



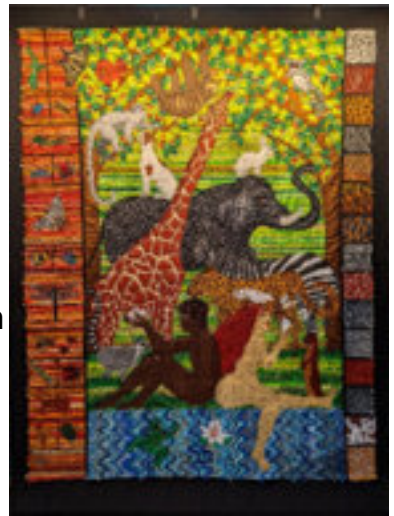
This August an exhibition of amazing textile panels was on display in Rochester Cathedral. Jacqui Parkinson is a textile artist, and has produced 12 huge embroidered pieces on the theme of Creation. The work took her three years and contains over 8 million stitches. The detail is really impressive.

The quilts are a retelling of the creation narrative in the book of Genesis. Jacqui has made an imaginative use of colour and texture, but most of all it's her



interpretation of the biblical themes that gives a fresh view of the original stories.

Jacqui chose this theme because for her, the creation stories contain 'layers and layers of truth.'



From Rochester the exhibition will be travelling to Portsmouth and Wells, then to the north of England in 2024.

Wetroom and Bathroom Installations

Specialising in wetrooms for the last 8 years.

All of my work comes with a one year guarantee, £5-million public liability insured.

If you've been told by other tradesmen that you can't have a wetroom, then get in touch.

General repairs - leak detection - replacements

Phone Gary on 07722 809856
bathrooms.gary@gmail.com

BLINDS • SHUTTERS
• CONSERVATORY BLINDS
Verticale | Rollers | Venetians | Romans | Panels
Painted Conservatory Blinds | Plantation Shutters



- FREE Professional design advice on all of our products
- Appointments at the comfort of your own home - at times that suit YOU!
- A fantastic range of styles, colours and products from top named brands to choose from
- Reliable and friendly customer service
- Expert measuring and fitting
- Only using manufacturers who are compliant to BS 5834:2015

From your Local Specialist Blind supplier based in Biggin Hill

To discuss your requirements call us on: **01959 509179**
email: info@benasa.net or visit us online at www.benasa.net



Come Dancing!

Every Thursday Morning

at Shirley Cox Dance Studio

24, Aperfield Road, Biggin Hill, TN16 3LU

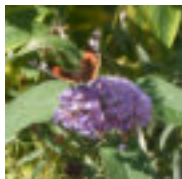
Dancing from 10am to 12noon

Enjoy a cup of tea or coffee and biscuits
Meet new friends & have a friendly chat

Whole session £12

01959 572859

Your 1st Thursday morning FREE!



Orchard Garden Maintenance

Making your garden a delight!

- mowing
- weeding
- digging
- planting
- pruning
- hedge trimming
- pressure washing

Phone : 01959 570244

Email: orchardgardening.tn16@gmail.com

Your local
friendly pest
company



Rats



Wasps



Mice



Squirrels



Cockroaches



Ants

Contact us for expert advice

01959 565 777

info@safeguardpestcontrol.co.uk



24hr
Emergency
Plumbing
& Heating
Service



Registered installer of Aquilisa Showers

All types of WATER TREATMENT
and DRAIN WORK

All types of PLUMBING & HEATING
SERVICING of GAS BOILERS
Saving heating costs



**DAVID RUDD
& SON**

MIP RP

Registered Plumber

Tel: 01959 577072

Mobile: 07831 641664

GAS SAFE REGISTERED

Established 32 years

Church Registers

MARRIAGES

"Those joined together in Holy Matrimony"

Cheyenne Dixon and Joshua Olaifa

FUNERALS

"The steadfast love of the Lord never ceases, His compassion never fails; every morning they are renewed"

**Ethel Evelyn Hudson
Doris 'Doll' Violet Putnam
Pauline Clegg
Robert 'Bob' Quick (RAF Chapel)**

BURIAL OF ASHES

**Sheila Watson
Pauline Clegg**

St Mark's Church All Souls' Service

**Sunday 29th October
3.30pm**

We shall be remembering our departed loved ones. If you would like us to read out the name of a loved one, please contact the Parish Office (01959 577816) or email admin@movingchurch.org before Monday 23rd October.

You might like to bring a single flower to lay on the altar.

There will be refreshments after the service



The Arts Society Limpsfield began as Limpsfield Decorative and Fine Arts Society over 40 years ago. It covers a wide range of interests, with a programme of lectures, visits, tours and special interest days. Top-quality speakers bring their subject to life in a fun and inspiring way - an enjoyable event to make you forget your cares! Our lectures are held at St Peter's Hall, Limpsfield RH8 0UD at 2:15 pm on the last Wednesday of the month.

On 25th October the well-known cartoonist Harry Venning (Clare in the Community etc) will give us a fun tour through cartoonists like Cruickshank and Hogarth up to the modern day. After the lecture there will be refreshments, tea and cake etc to welcome new members and welcome back old friends.

Free to prospective members. Join us as a Guest for £10 on the door. For more details look at our website The Arts Society Limpsfield. theartsocietylimpsfield.org.uk or contact the Membership Secretary on 01883 713065



For all your floral requirements

FLORIST

A personal service at a competitive price!

Lily of the Valley

309, Main Road (opposite St. Winifred's Road)
Biggin Hill TN16 3JJ
01959 571445

www.lily-of-the-valley.co.uk

Mobile Chiropodist



Chiropody undertaken
in the comfort of
your own home

Mandy Gifford M.Inst.Ch.P
HCPC Registered

Registered Member of the Institute
of Chiropody and Podiatry

Tel: 07944 763045



SEWING SERVICE

40 years'
experience

Wedding Dress Alterations Specialist

**Ladies & Gents Garments
Alterations, Restyling & Repairs**

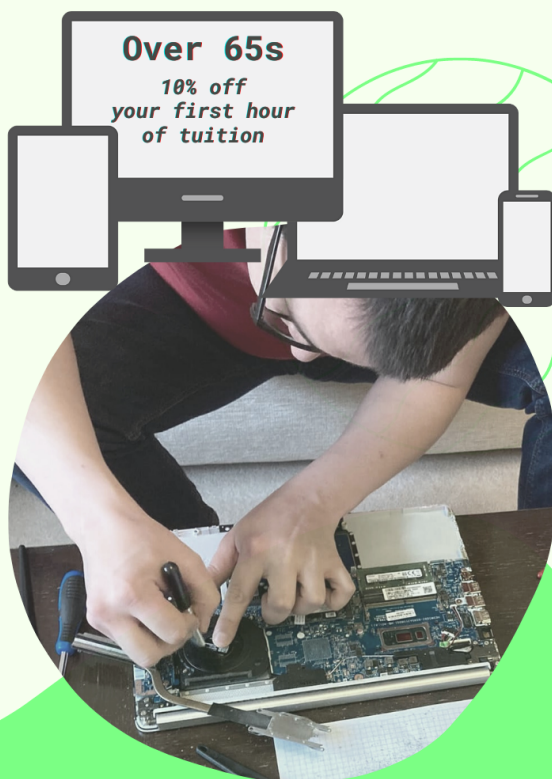
Biggin Hill

01959 546 551

Keeping IT Simple

*Solving all your technical support worries, calmly and patiently
in your own home, by someone who cares*

- > New Device Setup
- > Instruction & Tuition
- > Cleaning & Cooling
- > Virus & Malware Removal
- > Hardware Upgrades
- > Remote Support
- > Small Business Support
- > WiFi Routers & Networking
- > Cloud Storage
- > Data Backup
- > Data Recovery
- > E-mail Support
- > PCs & Laptops
- > Printers
- > Smartphones
- > Tablets
- > Televisions
- > Wireless Security Cameras



07375 416 176

dan@kisIT.co.uk

Safer Biggin Hill – making it happen?

It is with regret that we are, have, and continue to see far too much anti-social behaviour and crime in and around our community. Over recent weeks and months this has included mad riding of “dirt bikes”, stabbing, unruly behaviour on our streets, theft from shops, wilful vandalism, speeding, ignoring traffic road diversions and attacks on our wildlife. We have heard phrases of “what is happening in Biggin Hill”, “there are no police in Biggin Hill”, “Biggin Hill is going feral” and “Biggin Hill is full of mindless thugs”.

It is our opinion that we are, and the statistics do prove, no worse or indeed better than other Villages up and down the country. However, recently we have had our fair share of troubles, and this should not go unchallenged.



Although we would love for our Safer Neighbourhood Policing Team to be on duty 24/7, it is not practical and, like us all need their time of rest and recuperation. The Metropolitan Police Force, like all emergency services is stretched, with limited financial and staffing resources.

For those of you that we able to join us at our open public Police Meeting back in June here in the Village and subsequent meetings held around the borough, you will have heard the vision of the Sir Mark Rowley the new Met Commissioner. (www.met.police.uk).

However, to make the difference to our Village and to do it quickly, we all have a part to play. We, your local ward councillors, have been over the years advocates and supporters of self-help to assist the police in their duties.

But what do the Councillors do to help

We regularly liaise with our local policing team, we have regular quarterly meetings set up with the Superintendent Luke Baldock, as well as the rest of his dedicated Community Support Team.

We are active on our Safer Neighbourhood Panel, whereby along with the committee we hold the local police team to account, question and set priorities of issues, problem and crime that we wish to tackle.

We host and manage the Trade Watch Scheme, a WhatsApp group of traders, shop owners, pubs and traders that keep in touch passing on information about crime, suspicious happenings and incidents of theft.

Sophie sits on the Councils Public Protection and Enforcement Policy Committee, which examines and reviews the Borough wide policies in relation to all matters on protecting our residents, which includes you!

Melanie actively reads the hundreds of messages on the WhatsApp groups of Biggin Hill Alerts and Chats (let her know if you wish to have the link to join) and acts on reports and comment. At the time of writing this, Melanie has just

finished a call with PC Vicky regarding the recent catapult assaults on our wildlife.

We receive communications and disseminate dispatches from Trading Standards, Safer Neighbourhood Watch Association and the Council with an aim or better informing you of the current and up to date activities of criminals, rouges and not very nice peoples.

Melanie, alongside our local PSCO Ruth co-ordinate and manage the Safer Neighbourhood Watch Scheme and this is where we fall down and fail!

WHAT DO YOU DO?

Despite our best efforts of recruiting more people to join together and form a watch within their own area, street, road or close, we have only managed to recruit 2 official coordinators in the last 12 months.

This brings our total of Watches willing to look out for each other, pass information of scams, crime and generally be aware of each other to 4 known schemes in our community. If you are underground and do have your own network in place, please do let us know? Safety in numbers?



One of the reasons both, Sophie and Melanie became Councillors was to assist and help our community. Definition of community? “The condition of sharing or having certain attitudes and interests in common”. We love the fact that we all have the same vision of living in harmony, with shared values, working as a unit and wanting the best for our families, friends and fellow residents. SO WE NEED YOU! Help us solve the puzzle of endless crime and destruction on our community?

We need you to be part of an official group of residents living nearby, working together in protecting your property, your family, your way of life!

Mark 6:7-13. “Jesus had a team of disciplines who went everywhere with him. Jesus sends his discipline out to begin doing their own ministry in teams of two. He gave them specific instructions to not pack anything. But rather to rely on people who invited them into their homes.”

Contact us and become part of a team of like-minded people who want help, protect, share and be part of a group that will make your and your neighbour's environment healthier, safer, relaxing and enjoyable for all.

You know the numbers and details of how to contact us!

**Biggin Hill Councillors: Melanie Stevens
Sophie Dunbar**

07900 171266
07929 365228

Biggin Hill Residents Association

Your Biggin Hill Residents Association have been keeping busy, planning new projects, and raising funds in support of our local community. August saw our fabulous 'Diabolical Quiz' night held at Blundell's Squash Club which was very well attended. It was a great success, raising valuable funds for the Residents Association and thank you to everyone who participated. We will be running future quiz nights so make sure you stay tuned to our website and social media pages.

This brings us on to some exciting changes involving how you can engage with your Residents Association. We are currently redesigning and updating our website to bring you regular up to date information and easier access to contacts and membership. Further information will be announced in due course!

Sadly, our hotly anticipated Main Road 'Hoe Down' in July was rained off. Who knew July could be such a wash out! Determination is the name of the game here in Biggin Hill and with little notice, some of our members were able to carry out an impromptu clean up between the Stock Hill traffic lights and Spitfire Café, which I am sure you will agree, made a huge difference. Please visit us outside New Life Church between 10am-1pm on 23rd September, 7th October & 21st October if you would like to sponsor a poppy in memory of a loved one.

You will have already seen from your Local Independent Counsellors, here in The Moving Church News – WE NEED YOU! Please hear how you can join the Neighbourhood Watch, support your local community at our AGM and make a difference.

Annual General Meeting

Wednesday 11th October 2023 7pm for 7.30pm

New Life Church, Main Road, Biggin Hill

Guest speakers from

Biggin Hill Neighbourhood Watch & The Biggin Hill Shed

Followed by Cheese & Wine

info@bigginhillresidentsassociation.co.uk

A reminder that the Residents Association will be turning our attention to the upcoming Remembrance Day. Our friends at New Life Church will once again be hosting us as we offer the opportunity for sponsorship towards our wonderful poppy display in our village. Please visit us outside New Life Church between 10am-1pm on 23rd September, 7th October & 21st October if you would like to sponsor a poppy in memory of a loved one.

Poppy Day



Once again, your Residents' Association will be covering our Village with poppies.

Please 'Sponsor' one in memory of a loved one.

All money raised goes to Royal British Legion

Late Summer Colour!

As flowers fade and gaps appear in the border, don't despair, it doesn't mean that bright, colourful plants are at their end and summer is over in the garden.

By choosing plants carefully, you can keep the succession of fresh, vibrant flowers and foliage going, to extend the season well into October and even November by growing late summer flowering plants. They will continue to flower right through to the first frost, while providing insects with vital nectar and pollen they wouldn't usually have.



There are a wide range of perennials, as well as shrubs, grasses, bulbs and climbers. And if there is very little room in your border, you can grow a few spare plants in pots, enjoy them just as much or you can slot them into gaps when a hole appears.



Many of the plants mentioned below are in your local garden centres, waiting for you to plug those gaps in the border.

Typical plants, associated with this time of year, are the Michaelmas daisies. (Michaelmas, or the Feast of Michael and All Angels, is celebrated on the 29th of September every year.)As it falls near the equinox, the day is associated with the beginning of autumn and the shortening of days, it is one of the "quarter days".

Unrivalled for their range of late season flower colour of colours, with lovely contrasting dark stems, excellent for late colour, fantastic for pollinators and loves the sun. Botanists have split the genus, Aster and renamed many of which the largest group of Aster are almost all from America, now called Symphyotrichum. Available at different heights to suit all areas of the border.

Don't forget ornamental grasses, they provide height, interest and contrast beautifully with many late flowering perennials.

Another plant, which tends to be forgotten is Hesperantha, flag lily or the river lily (see above), semi evergreen, 60cms tall, starts to flower in September and will continue right into November. Comes in colours of rich red, salmon, white and pink, excellent for the border this time of year.



When bulbs are mentioned we all think of the typical spring bulbs, yet there is a lovely selection of bulbs available to plant either singly or in pots, providing some striking colours while others can tolerate shade and dry conditions, such as the

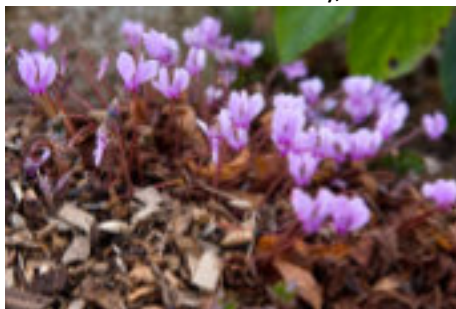


Cyclamen hederifolium (see below). It flowers like its cousin, the Christmas Cyclamen, they are 10 to 15cms tall, available in pink, cerise and white, some with marbled foliage follow afterwards and stays with you until the spring.

Other notable autumn flowering bulbs are the winter daffodil, *Stenbergia lutea* (see left), 10 to 15cms high in full sun or partial shade and the *Nerine bowdenii* or

the Guernsey lily, loves full sun, can be seen planted at the front of many bungalows along the coast. Other bulbs to consider is the naked lady, *Colchicum autumnale* and the autumn crocus, *Crocus speciosus*, similar height to other bulbs above, to plant among your dwarf perennials. Beth Chatto gardens has them coming up through their perennial geraniums.

So, it is not all doom and gloom this time of year, there are plenty of plants to consider raising your spirits, get out in the garden, look for those dull spots, take a trip to the garden centre, armed with your ideas, buy those plants and brighten up your day in the garden.



Enjoy your gardening!

Nick Hagon

Dates for your diary:

Wednesday 18th October, we have a talk by Chris on The Elements of Houseplant Care from 8 to 10 pm (doors open at 7.30) with refreshments, trade table and raffle available. Entrance for members is free, non-members £3.

Wednesday 15th November, we have our Annual General Meeting followed by our resident host, Gina demonstrating her skills in the kitchen, doors open at 7.30pm for 8 pm start, finish at 10 pm, Entrance is free, refreshments, a glass of wine and some nibbles.

The Biggin Hill & District Horticultural Society hold many events throughout the year. Should you wish further information, please contact Nick Hagon Chairman (Biggin Hill & District Horticultural Society) 01959 575799 between 6.30 and 9pm.

Thank you, enjoy your gardening!

Sevenoaks Philharmonic Choir

2023-24 Season

Ceremony of Carols & On Christmas Night

Britten • Chilcott

Saturday 2nd December 2023
St Nicholas Church, Sevenoaks

German Requiem Brahms

Saturday 23rd March 2024
Pamoja Concert Hall, Sevenoaks School

The Mikado

Gilbert and Sullivan

(concert performance)

with soloists from Grims Dyke Opera

Sunday 23rd June 2024

The Stag Theatre, Sevenoaks

Remembrance Sunday

'Lest we forget'

The peaceful poppies in fields they grow
Reflect the soldiers who marched in rows
The red is for blood shed in the war
The black for loved ones we never saw
The green is for hope destruction regrown
We remember those who never came home
On the 11th November we reflect
To remind us all 'Lest we forget'

Matthew Haswell (when 12 years old)

12th November

There will be a Communion Service in church at the earlier time of 9.30am. We shall then be assembling at the Biggin Hill War Memorial at 10.40am for the two minutes silence and to lay wreaths.



St. Mark's Church Christmas Tree Festival and Christmas Fair 2023

Can you believe that St Mark's Church in Biggin Hill is coming up to its 8th annual Christmas Tree Festival? There will be our usual amazing collection of trees and wreaths donated by a variety of local organisations and businesses, an opportunity to test your powers of observation with our popular quiz and activities for the children. If you haven't been to see it before, it really is a must. Children have also really loved seeing so many different Christmas tree ideas and making their own decorations. This year we are only keeping the displays until Jan 2nd 2024 because the necessary work to replace and upgrade the church lighting must start early January. The displays will also be shown on our live streamed Sunday Services for everyone to enjoy and we will continue to keep the canopy of light in the church every evening so that all can see this Beacon of Hope, shining out from St Mark's Church.

Added to this wonderful display, on Saturday 3rd December from 10am-2pm we have our Christmas Fair. We have our fabulous children's school choir joining us once again and there will also be a range of stalls to help you with your Christmas shopping and get you into the Christmas spirit. Refreshments will be available including many favourites such as the inevitable delicious cakes! Fun for all the Family!

This year we are offering tables for guests to use. If you are interested in having a table at our fair please phone 01959 576093 or contact the Parish office on 01959 577816. Only Christmas themed or craft goods please! £10 booked in advance.

The Church will be open for you to come and see as follows:

Friday 1st December 3pm-5pm

Saturday 2nd December 10am-4pm (plus the Christmas Fair from 10am-2pm!)

Sunday 3rd December 10.30am there will be Sunday Worship followed at 11.45am by viewing of the exhibition. At 3.30pm you are welcome to join in with the Advent Carol service and the church will then close at 5pm .



St Mark's Church Biggin Hill



Christmas Tree Festival

1st-3rd December

A Varied display of Christmas Trees and Wreaths

On Saturday there will also be a range of stalls to help you with your Christmas shopping and get you into the Christmas spirit!

Enjoy Coffee, tea, cakes each day.

Join in the singing of Advent Carols on Sunday at 3.30pm

Fun for all the Family!



Friday 1st 3pm-5pm

Saturday 2nd 10am-4pm

(Christmas Fair 10.am-2.00pm)

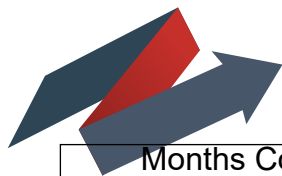
**Sunday 3rd 10.30am Sunday Worship followed
at 11.45am by viewing of the exhibition.**

Advent Carols at 3.30pm-close at 5pm



Table top— if you are interested in having a table at our fair please phone 01959 576093 or contact the Parish office on 01959577816. Only Christmas themed or craft goods please! £10 booked in advance.

Age UK - Bromley & Greenwich	0208 315 1850
Benefit Enquiry Line	0800 88 22 00
Biggin Hill Aperfield W.I.	01959 571360
Biggin Hill Community Care Association	01959 577400
Biggin Hill Councillors: Melanie Stevens	07900 171266
Sophie Dunbar	07929 365228
Jonathan Andrews (Darwin)	07811 313 559
Biggin Hill Evening W.I.	01959 700973
Biggin Hill Horticultural Society	01959 575799
Biggin Hill Library	01959 528053
Biggin Hill Musical Theatre Company	01959 701829
Biggin Hill Residents Association -	07763 215037
Biggin Hill Rangers, Guides, Brownies and Rainbows	01959 575717
Biggin Hill Romanian Group	07802 575417
Biggin Hill Society	01959 572569
Biggin Hill Scout Group	07983 447721
Bromley Council – Office Hours	0208 464 3333
Bromley Council - Emergency out of hours	0300 303 8671
Bromley Social Services - Emergencies only	0203 036 1574
Bromley Assoc. for People with Disabilities (BATH)	0208 663 3345
Childline (confidential helpline for children)	0800 1111 (24 hr)
Citizen's Advice Bureau (Bromley)	0208 315 1940
Community Links, Bromley	0208 315 1900
Crimestoppers	0800 555 111
Dial-a-Ride (For registration and enquiries)	0343 222 7777
Doctor's Surgeries –	
Stock Hill Surgery	01959 580011
Norheads Lane Surgery	01959 574488
Domestic Violence - 24hr Helpline	0808 2000 247
Electrical power cut - to be connected to the local network operator	105
FOAL Farm (Friends of Animals League)	01959 572386
GAS Emergency 24 hr freephone	0800 111 999
National Childbirth Trust (Biggin Hill)	01959 572209 or 01959 701765
New Life Church	01959 571667
NHS help line when you need medical advice	111
Police: Non Emergency Reporting	101
Local Safer Neighbourhood Team:	020 8721 2820
Princess Royal University Hospital	01689 863000
St. Mark's Parish Office	01959 577816
St. George's Memorial Chapel	01959 570353
Schools - Biggin Hill Primary	01959 575846
Charles Darwin Secondary	01959 574043
Cudham Primary	01959 572673
Oaklands Primary	01959 573963
Tatsfield Primary	01959 577356
Samaritans (Local branch) - 01689 833 000	24 hr - 08457 90 90 90
Textphone for hard of hearing	08457 90 91 92
Spitfire Youth Centre	01959 574835
St. John Ambulance	01959 701281
Thames Water	0845 920 0800
Trading Standards Rogue Traders Rapid Response	07903 852 090
Valley Hall Community Association	01959 573917/570020
Victim Support Scheme	0208 776 7071
Westerham Hill Baptist Church	01732 867516



The Next Moving Church News

Months Covered	Deadline	Distributed from
December 23 - January 24	10 th November	26 th November
February - March	19 th January	4 th February
April - May	15 th March	31 st March
June - July	17 th May	2 nd June

The Moving Church News is published every two months. For more information or for advertisement enquiries please contact Neil Walker - neil.walkerz@gmail.com - 01959 700815 or through the Parish Office

Contributions are welcome especially from local community groups or schools. Please contact Neil as above.

It's so easy...

...to support St Mark's Church
and you can gift aid your donation too



Please go to our website by scanning the QR code
above with your phone and then select 'web'

OR

type <https://www.movingchurch.org/support?/>
into the app you use to search the web.

Then follow instructions on screen.
You will need your debit or credit card handy.

THANK YOU!

Keeping up with everything at St. Mark's.

If you want to receive a regular email giving all of the details of events and services at St. Mark's please send your details to Chris Walker. Her email is chrissy.walkerz@gmail.com. Your email address will not be passed on to anyone else.

ADVERTISE!

**An ad in full colour costs from
just £60 per year.**

2700 copies of the Moving Church News are distributed in Biggin Hill every 2 months

Provide your own material or we will design an advert for you

Contact Neil for more details
01959 700815
neil.walkerz@gmail.com

W. UDEN & SONS LTD

INDEPENDENT FAMILY OWNED FUNERAL DIRECTORS

MONUMENTAL MASONS

Est. 1881

186 Main Road, Biggin Hill

Tel: 01959 573130

(24hr answer service)

OFFERING A FULL SERVICE

PREPAID FUNERALS AVAILABLE

**PRIVATE CHAPEL OF REST
on the premises**



Continuing to build on the family traditions of personal and caring service for over 100 years in the area

We are always available to visit you personally to make any necessary arrangements in the privacy of your own home.

**Branches at Petts Wood, Sidcup, Eltham,
Dulwich, Bexleyheath & Camberwell**